

# ORIGINAL

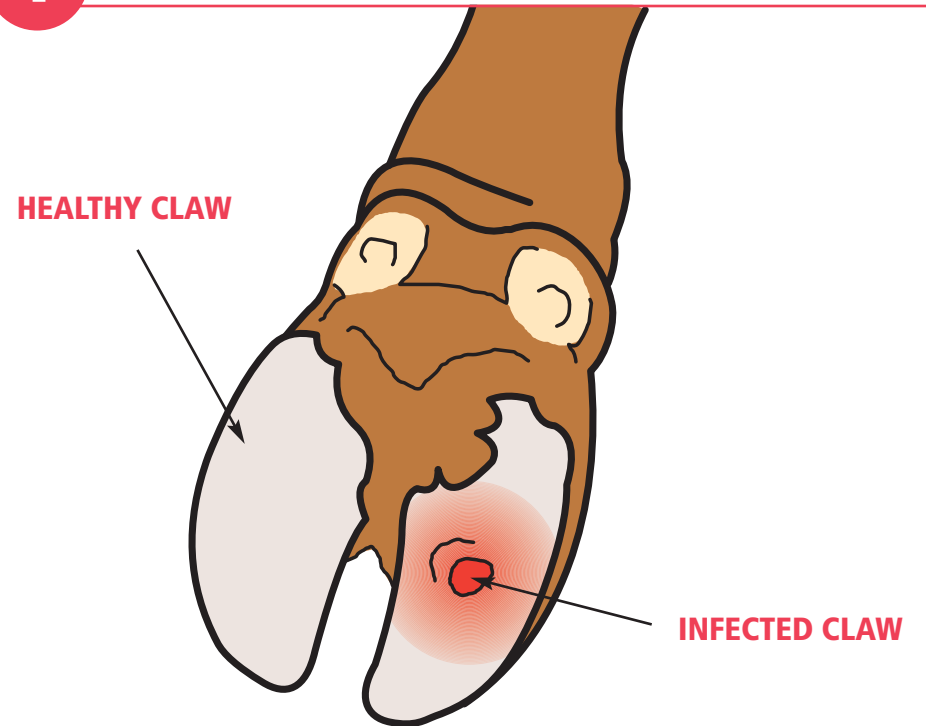
# COW CLOG

## Use gloves at all times when using Original Cow Clog

The setting speed of the glue used for Original Cow Clog is dependent on the temperature. On hot days (short sleeve weather) the glue, once mixed, will set faster than on cold days.

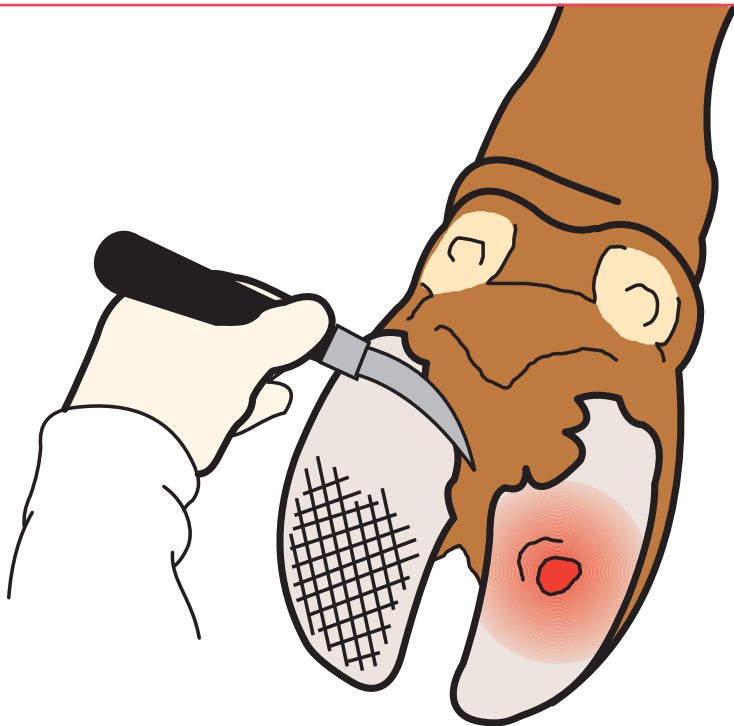
In order to achieve fast setting on cold days, it is recommended that the liquid component ('Methyl Methacrylate') is pre-heated to **BODY TEMPERATURE** before mixing with the powder by use of a bottle warmer or immersion in warm water. **DO NOT USE BOILING WATER.**

### 1 PREPARE HOOF, CLEAN AND THOROUGHLY DRY.



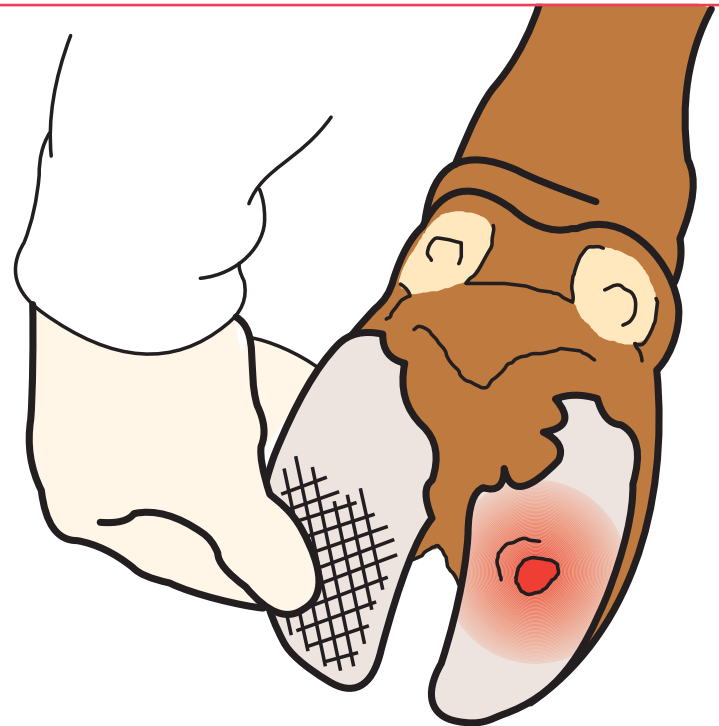
Restrain the cow's foot to keep it as still as possible. Examine the hoof to see which claw is infected or bruised and decide if using a Cow Clog will help aid the healing process. Clean and dry the foot. **The glue will not stick to a wet surface.** On cold days to speed up the setting of the glue, warm the liquid component to body temperature. This should be done before starting to trim the hoof.

### 2 PREPARE HOOF, CLEAN AND THOROUGHLY DRY.



Flatten the HEALTHY claw with a hoof knife or rasp. Score the claw to give a good key for the glue.

### 3 PREPARE HOOF, CLEAN AND THOROUGHLY DRY.

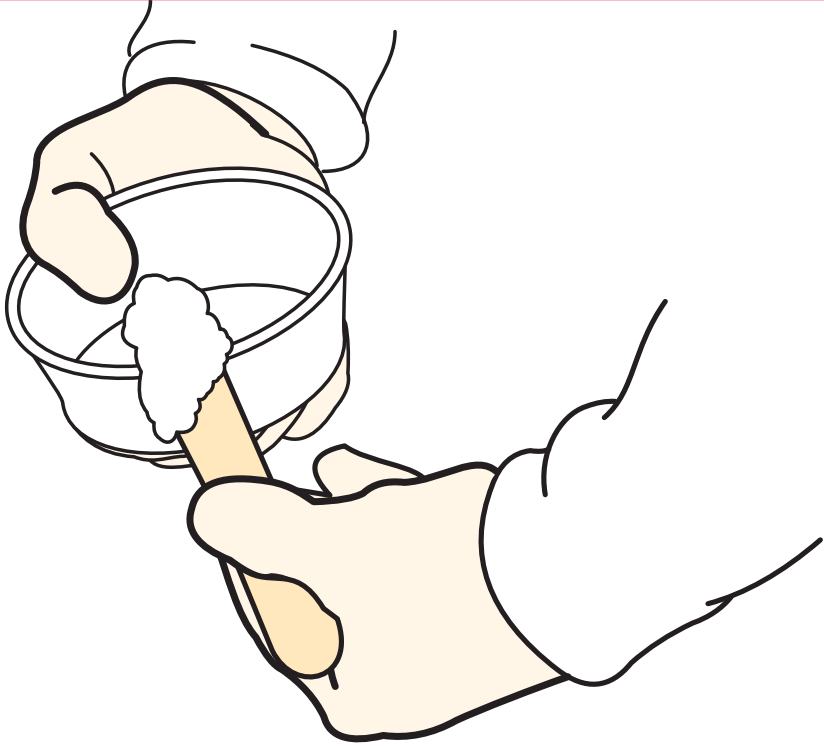


Wipe the HEALTHY claw with white spirit to remove any grease from the surface. Dry with a clean cloth or paper towel. Avoid touching the claw.

# STEP BY STEP INSTRUCTIONS

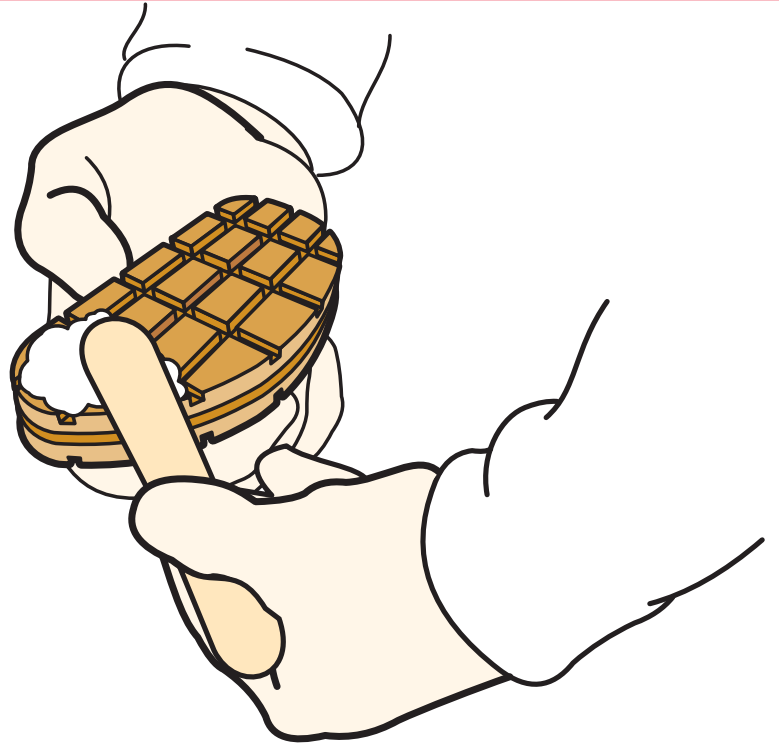
# STEP BY STEP INSTRUCTIONS

## 4 APPLY WARMED GLUE TO WARMED CLOG.



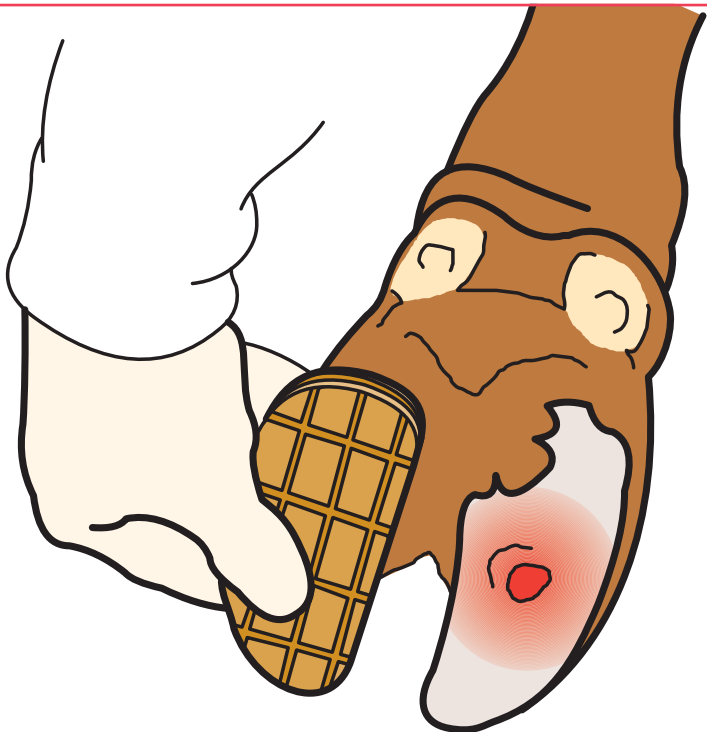
Pour the powder and liquid component of the glue into the mixing tub provided. Use the entire contents of the bottle and the sachet. Mix the two components with a wooden spatula until all the powder has dissolved. Keep mixing the glue until it has a thick doughy consistency. Once it gets to this stage you will need to work as quickly as possible because the glue will begin to harden rapidly.

## 5 APPLY WARMED GLUE TO WARMED CLOG.



Using the spatula put HALF of the glue as a dollop on the front two thirds of the Cow Clog.

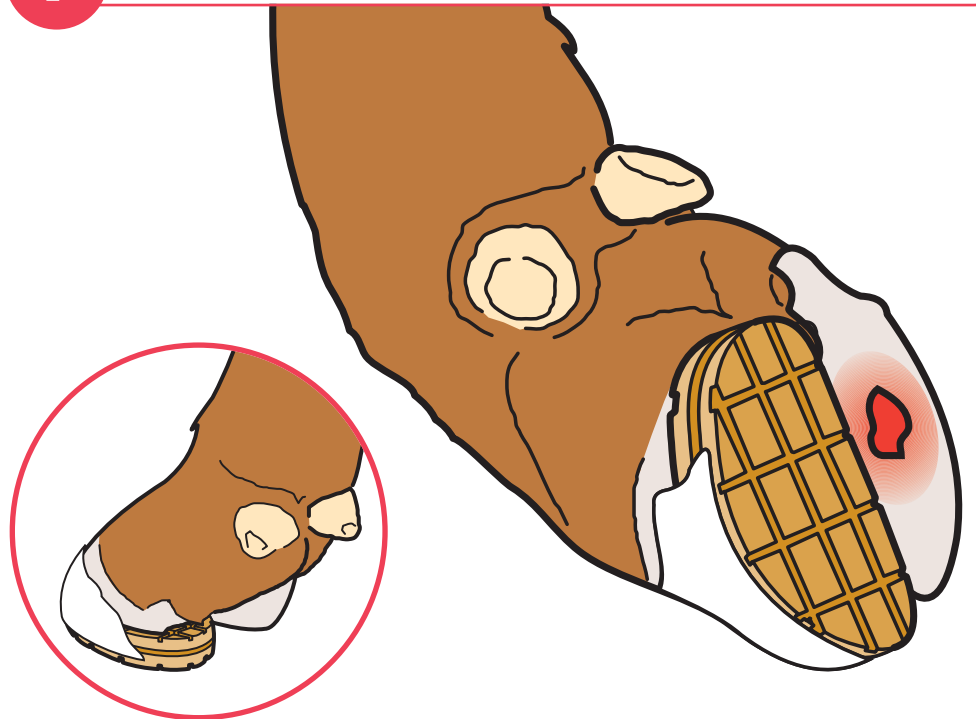
## 6 IMMEDIATELY POSITION THE COW CLOG.



Press the Cow Clog onto the healthy claw until glue oozes out from the side and front. **AVOID GETTING GLUE ON THE SOFT HEEL TISSUE OR BETWEEN THE CLAWS.**

**WARNING: DO NOT MOVE THE BLOCK ONCE IN POSITION.**

## 7 HOLD THE BLOCK IN POSITION FOR 30SECS.



Wet your fingers, to stop the glue sticking to them. Use your fingers to mould this and the remainder of the glue around the sides of the claw and the Cow Clog. This ensures a secure fixing. In the final stages of hardening a chemical reaction takes places and the glue starts to get hot. To speed up the process use a hot air blower or a hair dryer. The glue is completely set when it can no longer be scored with a finger nail.